

BIPV 玻璃幕墙光伏接线盒 – 规格说明书

BIPV JUNCTION BOX INSTRUCTION



Zhejiang Xinhui Photovoltaic Technology Co., Ltd.

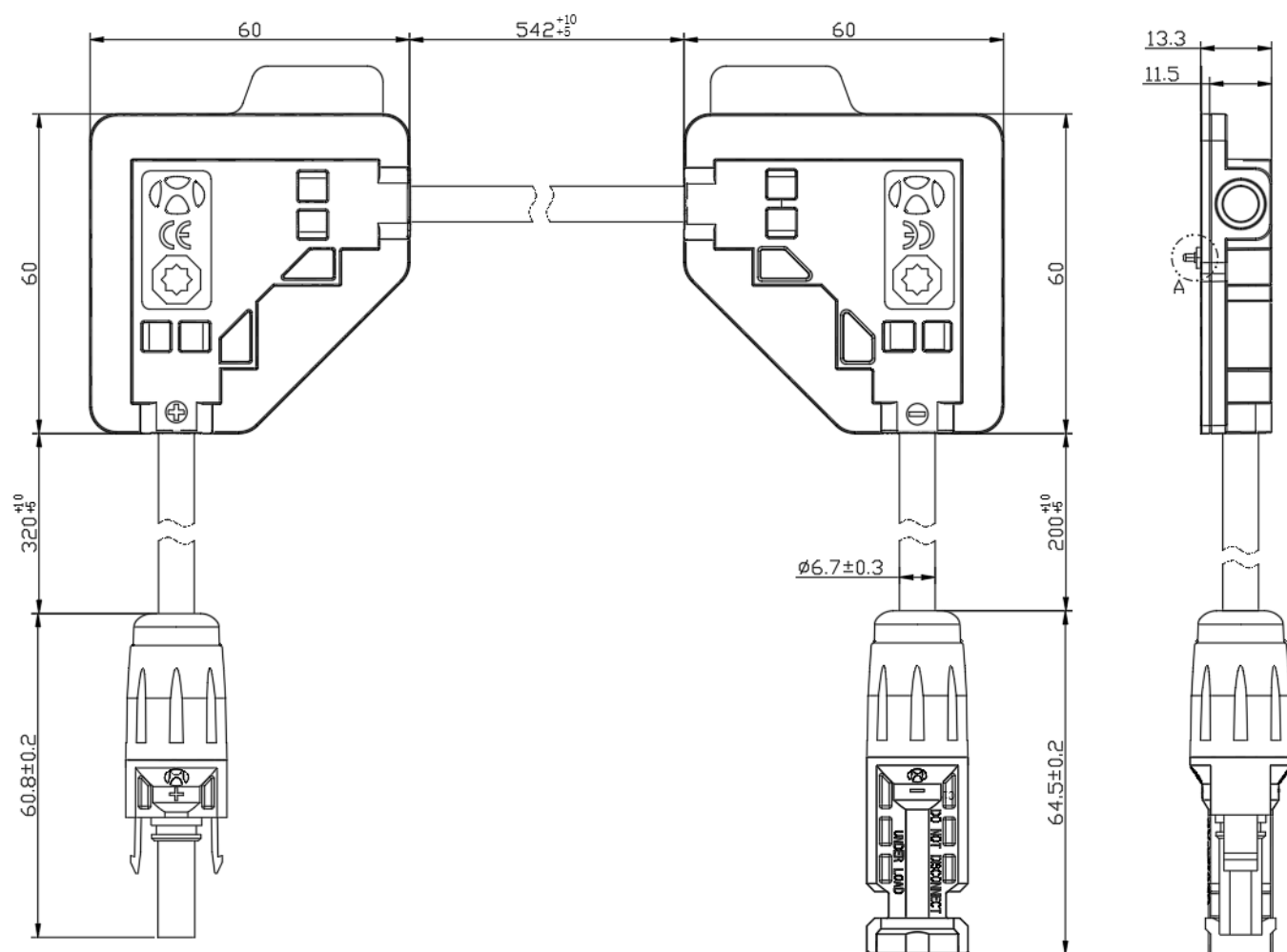
Add: Wei 3 ROAD 192 Lane 22, Yueqing Economic Development Zone, Zhejiang, P.R. China.

Tel: +86-0577-62072578 Fax: +86-0577-57151071

E-mail: pengqj3@chint.com

<https://www.xh-pv.com>

产品图纸 Product Drawing



产品介绍 Product Overview

该产品在设计使用时有以下特点：

1. 使用3M双面胶与组件粘贴。
2. 箱体内部只需局部使用灌封胶密封。
3. 线缆与导电体采用焊锡工艺。
4. 线缆引出位置采用超声波工艺与箱体、底座锁紧。
5. 探针与组件电气链接，箱体中间用线缆直接连接。
6. 该系列只适用于玻璃幕墙组件。

The product has the following features when designed and used:

1. Use 3M double-sided adhesive to stick to the component.
2. The interior of the box only needs to be sealed locally with potting adhesive.
3. The cable and conductive body adopt tin coating process.
4. The cable outlet position is locked with the box body and base using ultrasonic technology.
5. This series is only applicable to glass curtain wall components.
6. The probe is electrically connected to the component, and the middle of the box is directly connected with a wire.

功能描述 Function description

该产品有以下功能：

1. 电气连接：将玻璃幕墙组件产生的电力与外部线路连接，传导玻璃幕墙组件所产生的电流。
2. 旁路保护：该产品内存在旁路二极管，当组件内某处电池片出现热斑效应不能发电时，起旁路作用，让其他电池片所产生的电流从二极管流出，使组件继续发电。

The product has the following functions:

1. Electrical connection: Connect the electricity generated by the glass curtain wall components to external circuits to conduct the current generated by the glass curtain wall components.
2. Bypass protection: there is a bypass diode in the product. When the hot spot effect of a battery in the module fails to generate power, it plays the role of bypass, allowing the current generated by other batteries to flow out of the diode, so that the module can continue to generate power.

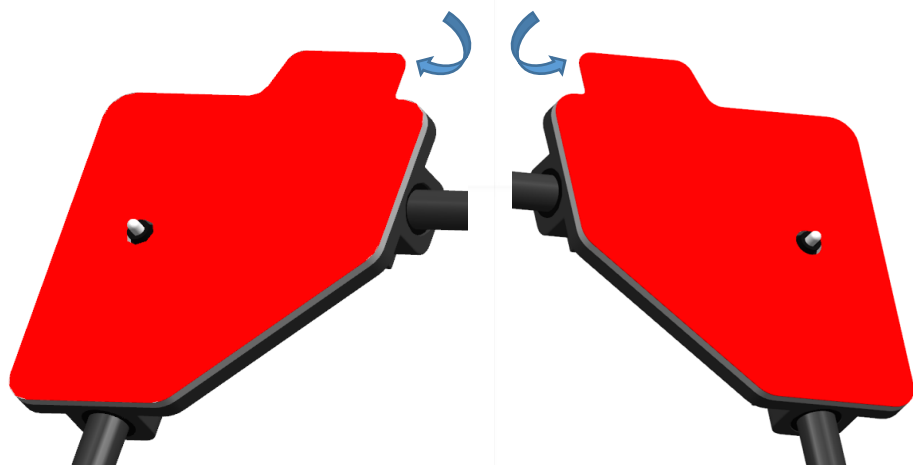
技术规格 Technical Data

技术规格 TECHNICAL DATA

产品型号Product Type	Junction Box-XH	
额定电流Rated Current	4A	
额定电压 Rated Voltage	1000V	
反向电流 Reverse current	20A	
环境温度 Temperature Range	-40~+85℃	
保护等级 Protection Degree	IP65/IP68(1m,1h)	
线缆规格 Rated Cable Wire	IEC 131 2.5mm ²	UL: Rated sunlight resistant, 90°C wet or dry, 1000 V,14AWG, with nominal 6.4mm/7mm outer diameter, 45strands.
接线盒尺寸 Overall Dimensions	Left Housing: 60mm×60mm*11.5mm Right Housing: 60mm×60mm*11.5mm	
安全等级 Safety Degree	II	
阻燃等级 Flame Resistance	5VB	
绝缘材料 Insulation Material	PPE+PS, PX9406P(RR)(IT), N1250 (RR)(IT)	
二极管数量No. of Diode	1	
可选连接器 Optional Connector	HCA30	
二极管 Diode selection	10A10G	

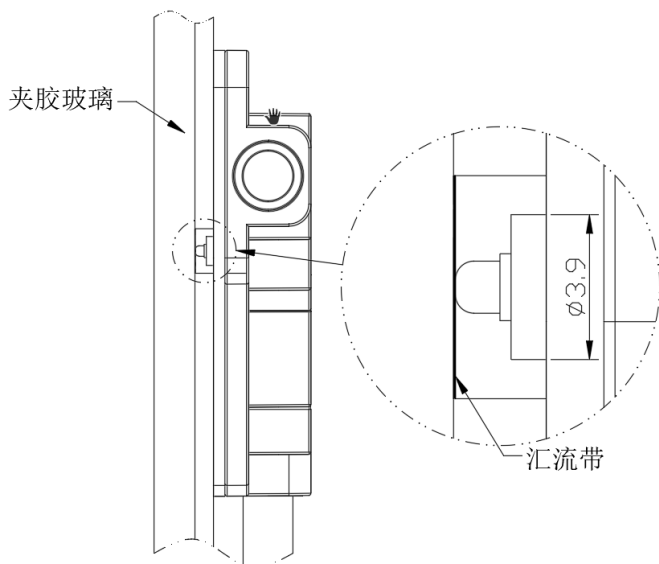
操作方法 Operation Method

1. 剥离3m双面胶的红色离型纸将接线盒粘到玻璃组件指定位置。 Peel off 3m double-sided adhesive red release paper and stick the junction box to the designated position



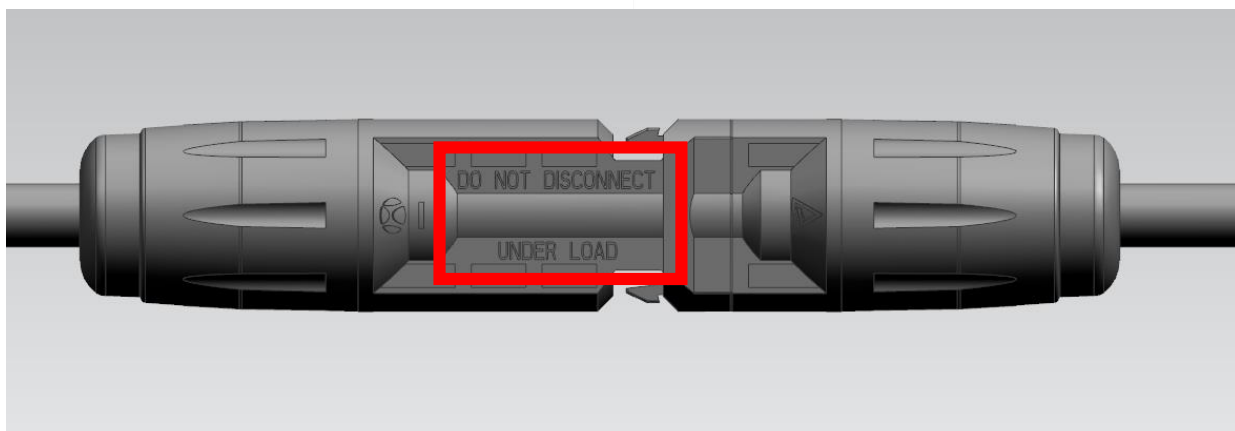
2. 将接线盒探针对准玻璃幕墙组件预留位置粘贴，探针头部与组件汇流带连通。

Align the junction box probe with the reserved position of the glass curtain wall component and paste it, with the probe head connected to the component busbar.



注意事项

1. 禁止烷烃类、强酸、强碱物质接触连接器、接线盒，如汽油、清洗润滑剂、电子复活剂等含有烷烃物质的溶剂和工业污染排放的特殊气体等。
2. 连接器不可以和硅胶、灌封胶直接接触，连接器线缆禁止挂、拉重物。
3. 产品装卸及运输过程中注意轻拿轻放，不要受外力重压，以免造成损坏。
4. 工作人员应配有适当的静电防护措施。
5. 接线盒箱体底面和背板粘接时，沿箱体底面涂抹粘接剂要均匀，防止漏水。
6. 汇流带装入时要注意汇流带是否干净，有无粘接剂，否则会影响焊接质量和组件的发电功率。
7. 安装接线盒时不能将同一套的接线盒的正负极连接器插合在一起。
8. 如果不是维护需要，请不要频繁进行连接系统的开合或插拔。
9. **维护时连接器不允许带电插拔**（见下图连接器警示语）。
10. 户外维护应由专业人员进行。
11. 电气安装说明应包括根据美国国家电气规范ANSI/NFPA 70使用的接线方法的详细描述。



Matters Needing Attention

1. It is forbidden for alkane, strong acid and strong alkali substances to contact connectors and junction boxes, such as gasoline, cleaning lubricants, electronic resurrection agents and other solvents containing alkane substances, as well as special gases discharged from industrial pollution.
2. The connector shall not be in direct contact with the silica gel or the filling and sealing glue. The connector cable shall not be hung or pulled.
3. Handle gently when load , unload and transportation, and not subject to external pressure, so as to avoid damage.
- 4.The staff should be equipped with appropriate electrostatic protected measure.
- 5.When the bottom of the box is spliced with the solar panels, adhesives should be daubed evenly to prevent leakage
6. Pay attention that confluence straps is clean or not , whether it have adhesive or not When they are inserted. Otherwise, it will impact the quality of welding and the generating power of components.
- 7.When the junction box is installed, the positive and negative pole of the same set of junction box can not be inserted together.
8. If do not need to maintenance, please don't open , close plug the connection system frequently.
- 9.**Do not plug or unplug under load. This information printed on the connector.**(See the connector warning below)
- 10.Outdoor maintenance should be carried out by professionals
- 11.The electrical installation instructions shall include a detailed description of the wiring method to be used in accordance with the National Electrical Code, ANSI/NFPA 70.

